

Floor Drains and Collecting Tanks
Floor Drain with Stainless Steel Grate
and Central Drain - Horizontal outlet
400x500 mm

ITEM # _____
MODEL # _____
NAME # _____
SIS # _____
AIA # _____



328066 (FDD4050)

Floor Drainage Channel with
stainless steel grate, central
drain - horizontal outlet,
400x500

Short Form Specification

Item No. _____

Constructed in 304 AISI stainless steel. Collecting tank with
central siphon and horizontal drain pipe. Anti-slip mesh grate.

Main Features

- Easy to install.
- Anti-odour syphon.
- Removable waste blocking filter.
- Rag bolt for floor fixing.
- Easy to inspect for any possible waste removal action.
- Electrochemical finishing gives grids a bright appearance.
- Ideal for any drain solution, particularly suggested for great amounts of water drained during cleaning operations.

Construction

- Adjustable leveling feet.
- Anti-slip mesh 25x25 mm grating, h=25 mm, 1.5 mm in thickness.
- Collecting tanks available with horizontal drain pipe.
- Constructed entirely in 304 AISI stainless steel.
- Collecting tanks with central siphon.

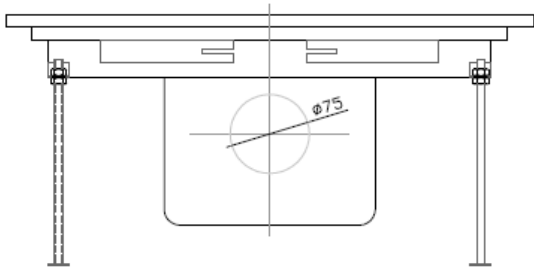
APPROVAL: _____



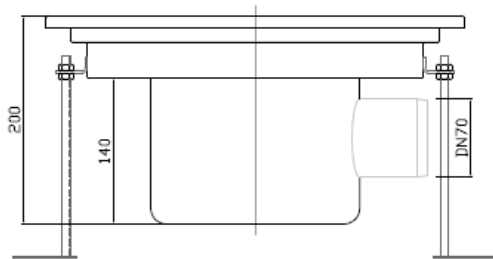
Electrolux
PROFESSIONAL

Floor Drains and Collecting Tanks
Floor Drain with Stainless Steel Grate and
Central Drain - Horizontal outlet 400x500 mm

Front

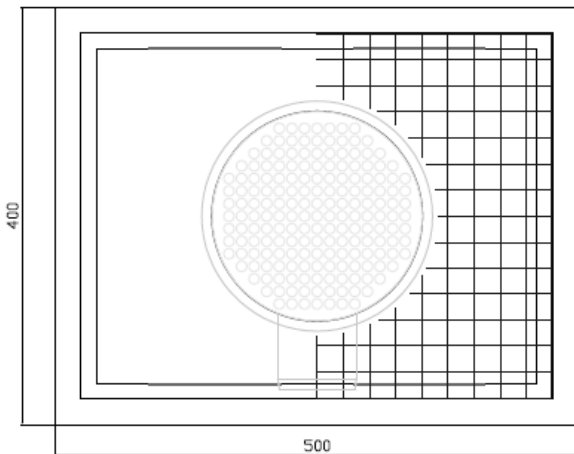


Side



D = Drain

Top



Key Information:

External dimensions, Width: 500 mm
328066 (FDD4050)

External dimensions, Depth: 400 mm

External dimensions, Height: 200 mm

Net weight: 10 kg